



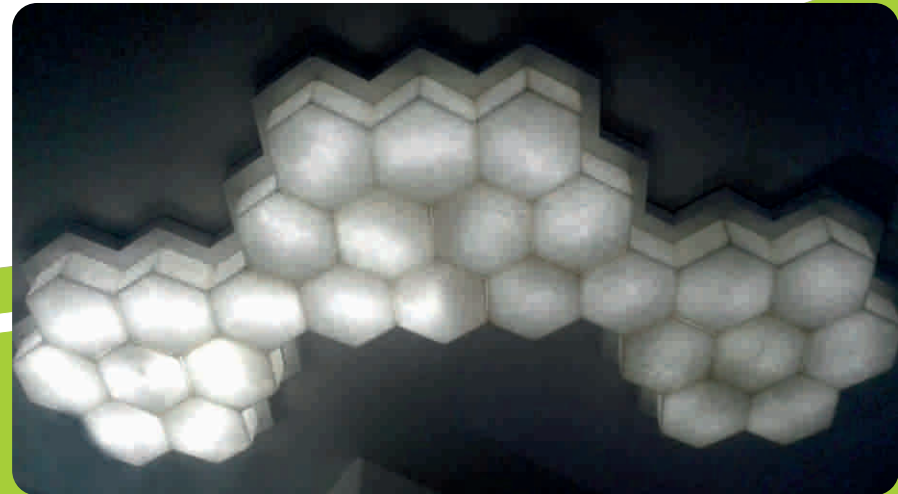
Alabaster | Solid Surface | Onyx



Manufacturers of : Alabaster | Solid Surface | Onyx

# Who we are?

Revex Enterprises Pvt. Ltd. represents a part of the Revex group, which has been serving the industry for over 6 decades with dedication & commitment of quality products in the Engineering sector. With professionally managed staff, the group is performing well with excellent Quality Control measures to deliver the best of its kind products. Innovation, Commitment, Dedication are the building pillars of the group resulting in which we have ventured into eco friendly and economical Revexo Artificial Translucent Stone, Decorative Panels, Solid Surface. With state of the art manufacturing and R & D facility we strive to manufacture the finest Revexo products. The company has done technical collaboration with the leaders in the world for manufacturing Artificial Translucent Stone Solid Surface and decorative panels and has wide presence in the European, Middle Eastern and US markets.



# INDEX

Artificial Translucent Stone/Alabaster

Solid Surface

Onyx - 15 mm

Marble - 15 mm

Onyx Wash Basins

RE-3011



RE-3012



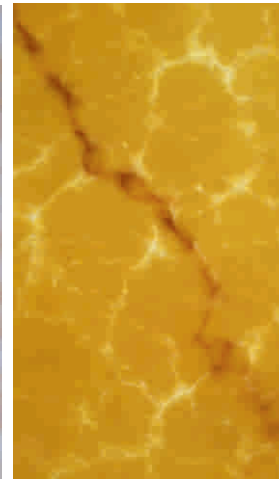
RE-3017



RE-3052



RE-3016



RE-3077



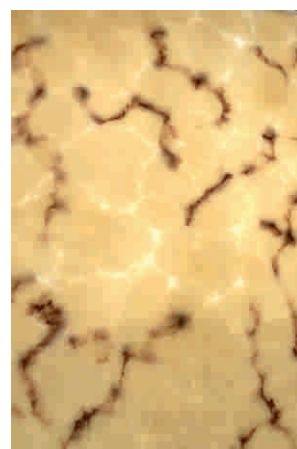
RE-3013(A)



RE-3022



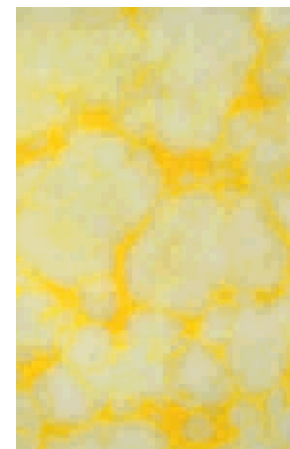
RE-3023



RE-3014



RE-3013



RE-3054

Sizes Available : 8 x 4 feet  
Thickness : 6 & 12mm





RE-2001



RE-2003



RE-2004

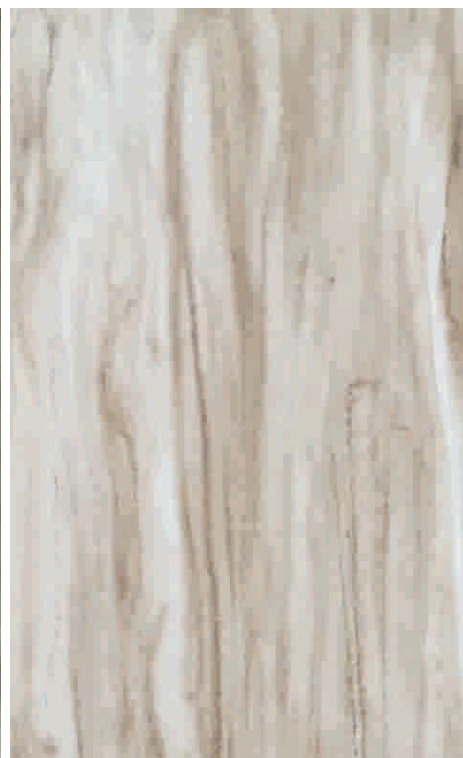


RE-2005

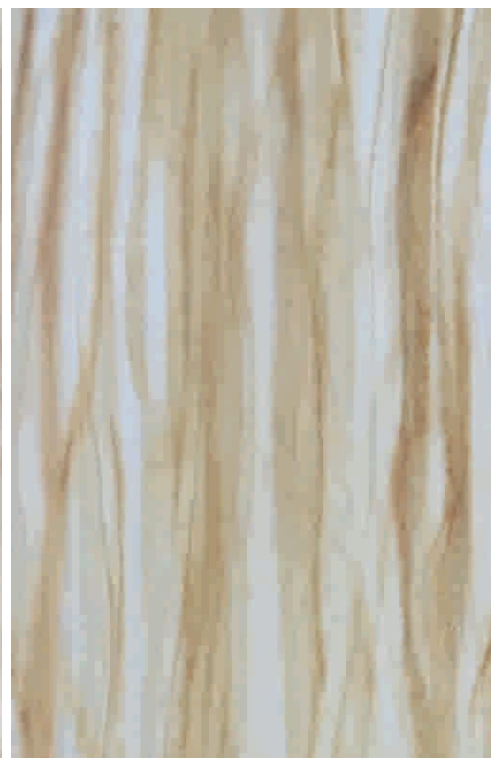
Sizes Available : 8 x 4 feet  
Thickness : 6 & 12mm



RE-4005



RE-4004



RE-4003



RE-4001

Sizes Available : 8 x 4 feet  
Thickness : 6 & 12mm

**Stripe Series**

# Applications

## Reveco® Artificial Translucent Stone

is an ideal material for various applications such as:

- Light and Lamps
- Table Tops
- Lift area
- Home Decoration
- Wedding Box and so on
- Jali Pattern
- Vanity tops
- Stairs
- Cinema Halls
- Sinages
- Wall paneling
- Column cladding
- Outdoor Application
- Furniture
- Ceiling
- Bar Counter
- Advertisement

## Advantages

Below mentioned are few points which will make it irresistible product even more irresistible :

### Price :

Reveco® is a pocket friendly product range, especially in comparison to Original Onyx / Alabaster stone and marble.

Reveco® is not a natural material, so it can be produced in large number s resulting to economy of production which is later on passed to the consumer itself.

### Thermoformability :

It can be molded to any for of your choice. The best to satisfy ones creative urge.

### Easy Fabrication :

Skilled carpenters, tile setters and glaziers can easily install Reveco® material using basic carpentry tools.

### Colour & Design :

More options available in terms of colours and designs as compared to natural stone and marble

Also Specific colour can be manufactured according to customer requirement

### Nonporous :

Being a nonporous material, it does not allow stains to make their way deep into the surface which make it a stain resistant, easy to clean products.

### Scratch Resistant :

Unlike other solid surfaces it can easily be renewed and repaired if scratched or chipped. If scratches appears after years, it can be renewed to new surface by buffing.

### Water-resistant

No harm with warm and cold water

## Product Properties

S.NO	INSPECTED AREA	UNIT	STANDARD
1.	Density	g/cm <sup>2</sup>	≥ 1.2
2.	Hygroscopic Capacity	%	≤ 0.4
3.	Stretching Strenght	Mpa	≥ 15
4.	Compressed Pressure	Mpa	≥ 20
5.	Flexural Strenght	Mpa	≥ 10
6.	Hardness (Degree)		≥ 70
7.	Cigarette Burn Resistance		No marks left behind bu co ors slightly turn in yellow (Put the burning cigarette on the surface 3 sec)
8.	Heat Resistance		Put it into 100%C boiling water for 30 Sec, no bubbles appear
9.	Boiling Water Resistance		No obvious change in color
10.	Stain resistance		Tea Stains, coffee stains and ink can be cleaned easily by normal cleaning detergent
11.	Fungi & Bacteria		No attack
12.	Fire Retardant		As per I.S 6746-1994 standard

## FABRICATION :

### Basic Fabrication Techniques

Reveco® is a material which combines the durability of stone with the workability of hardwood. Following sections describe the most important elements.

- **Cutting :**

Reveco® is harder than wood. Straight cuts are made with a circular saw with carbide - tipped or diamond-tipped teeth. Curved cuts are made with manual routers or with numerically controled routers (CNC), depending on the number of identical pieces that need to be cut. Rounded inside corners are routed in order to prevent cracking. Router bits must have tungsten carbide tips



- **Joining :**

To minimise material and facilitate installation, corner joints should be made 45 degree (mitre) rather than butt. The edges to be joined should be straight, smooth and clean. Joints should only be made with "Reveco® Joint Adhesive" mitre joints with a router equipped with a V groove carbide bit. Corners of a joints must be rounded to 2 mm radius and edges smoothed, top and bottom, all around a cutout.



- **Finishing :**

Finishing Reveco® is a critical part of the end consumer's perception of a your ability to fabricate Reveco® Under normal circumstances, begin by sanding the joints with 120 grit paper, Finish with a 320 grit paper, followed by 1200 to reach a recommended semi-gloss leve.



## INSTALLATION

- **Backlit Application**

Kindly observe that distance between Reveco® sheets and light source will vary due to material thickness, specific colour and lighting to be employed. Please test before installation that desired lighting is achieved. If florescent tubes are used than additional clearance may be required due to heat generated by the tubes. In case of neon, LED fibre optic lighting allow a sufficient

cavity to avoid "hot spotting" of light.

We Recommend approx. 4 inch gap from light source.

- **Non backlit applications:**

When applying Reveco® sheets over a solid opaque substrate colour variations in the substrate may "show" through the translucent panels, For best results the substrate or wall should be a uniform colour (usually whit) and a Silicone Adhesive should be used.

## CARE & MAINTENANCE

Matte Finish

- **Basic Care**

Most countertops have a matte finish. For this finish, rub the stain with an abrasive cleanser and Green Scotch-Brite® pad with water. Always rub in a circular motion. Rinse and towel dry. Rubbing the entire surface occasionally will maintain the finish.

- **Scratch Removal**

Hand sand the cut or scratch using 220 grit paper, sanding in a circular motion. Follow by using a 320 or 400 grit paper, again in a circular motion.

- **High Gloss Finish**

- **Basic Care**

If the counter has a polished or high-gloss finish (not recommended for countertops or other high -use or high traffic areas) non abrasive cleanser applied with a sponge or use a white polishing compound rubbed with a soft cloth

- **Scratch Removal**

Note : Sand the area with 1500 or 2000 grit paper, always sanding in a circular motion. Buff the area with a white polishing compound using a low-speed polisher equipped with a wool pad. If desired, a non-abrasive countertop polish may be applied. To minimize material and facilitate installation, corner joints should be made 45 degree (mitre) rather than butt. The edges to be joined should be straight, smooth and clean. Joint should only be made with " Reveco® joint Adhesive" mitre joints with a router equipped with a V groove carbide Bit .Corners of a joints must be rounded to 2 mm radius and edges smoothed, top and bottom, all around a cutout.





ALABASTER

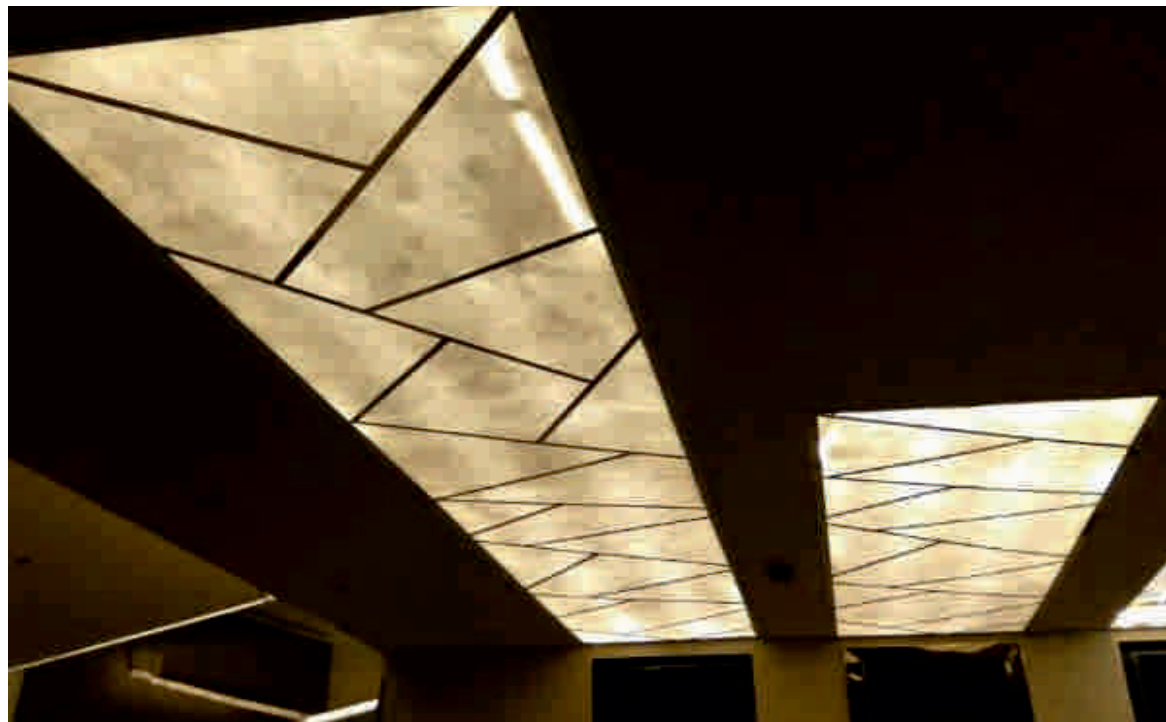
Applications : BAR COUNTERS



ALABASTER

Applications : Side Walls

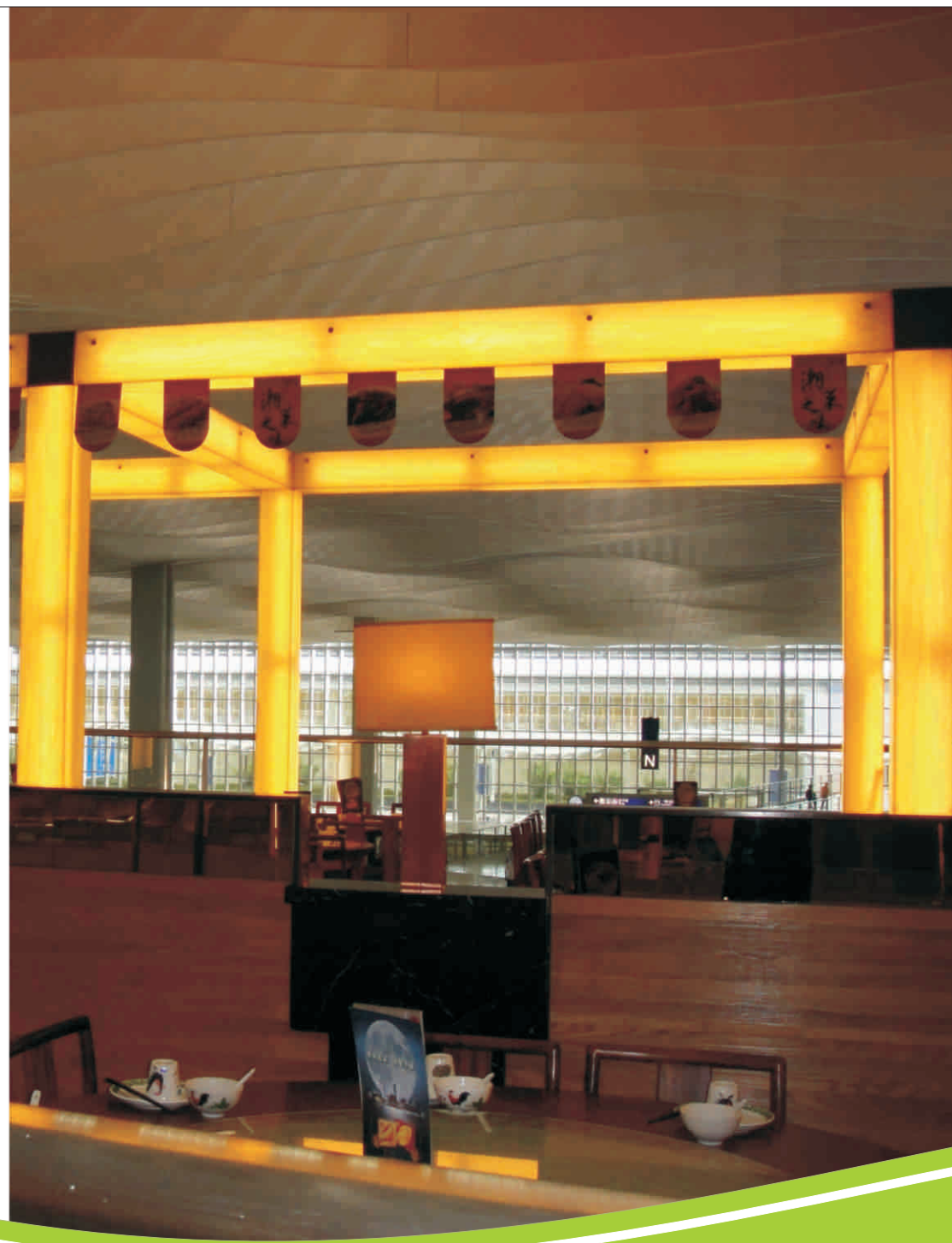
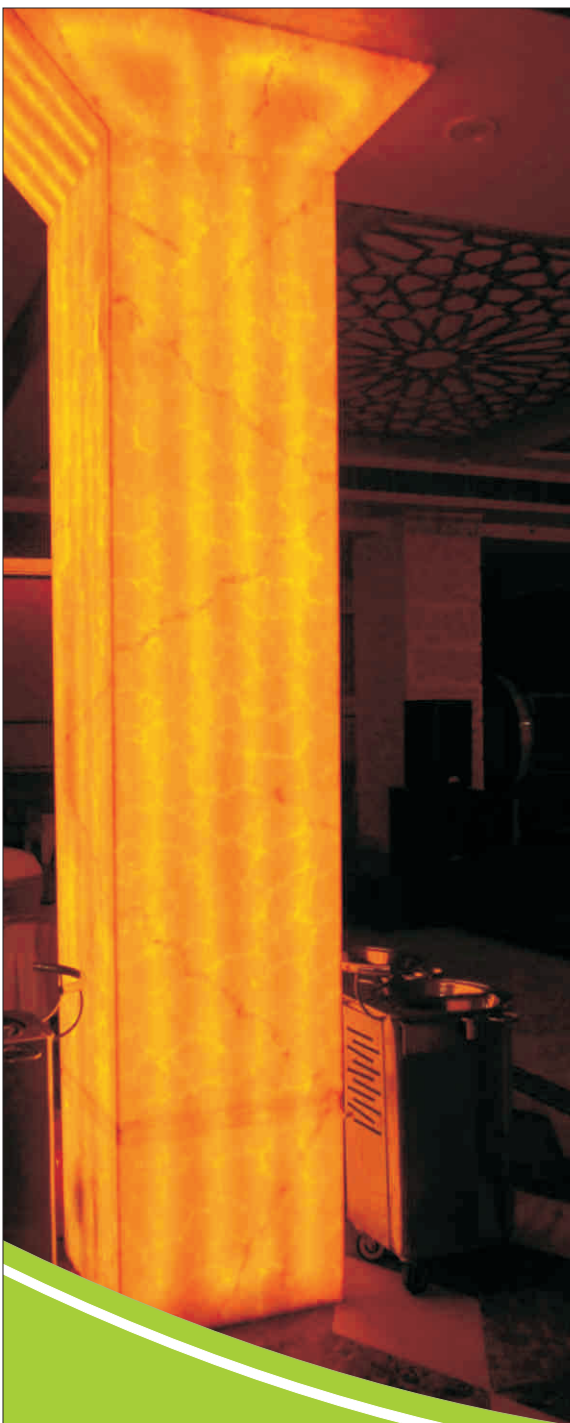




ALABASTER

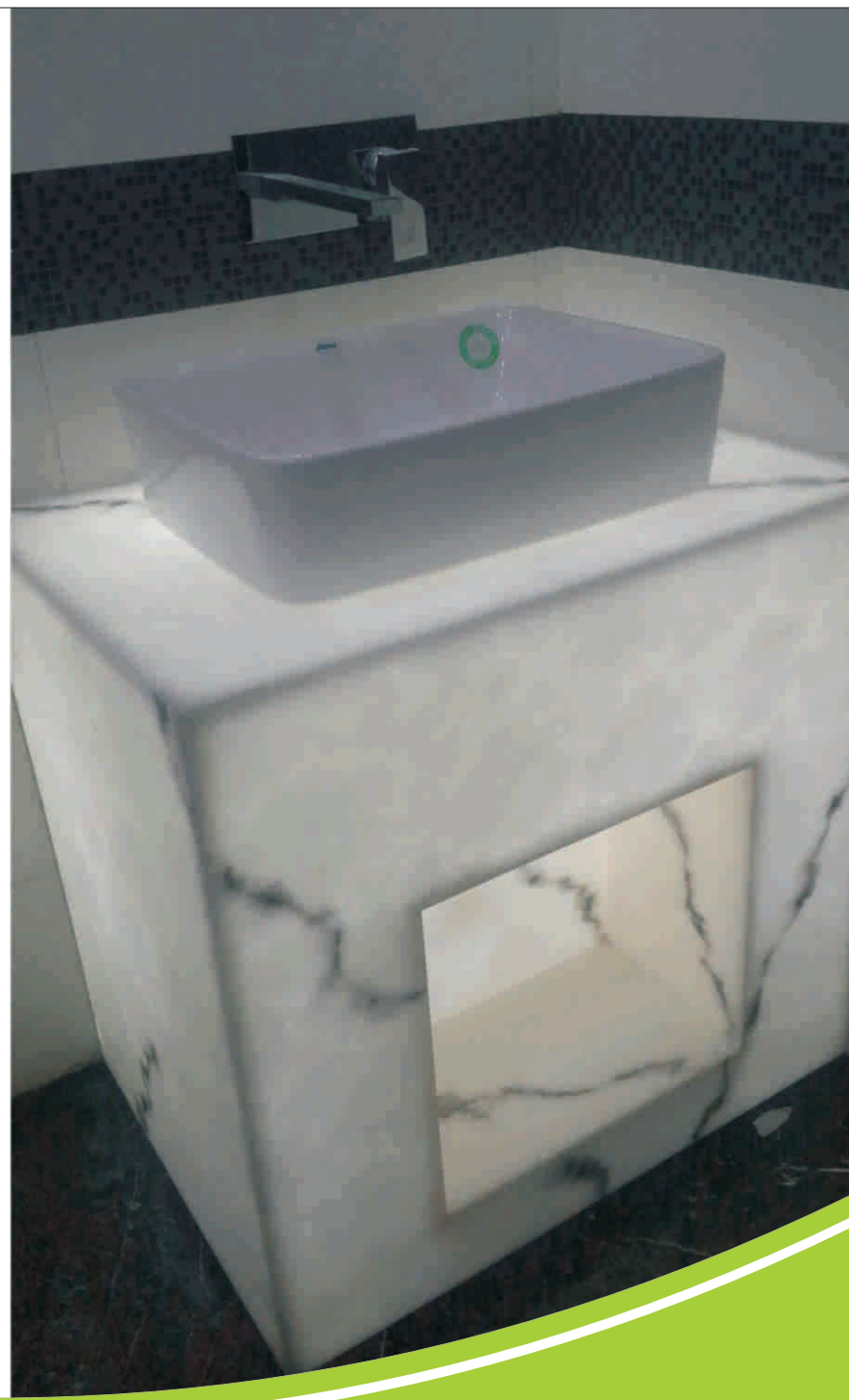
Applications : Fall Ceiling & Stairs





ALABASTER

Applications : Pillars



ALABASTER

Applications : COUNTER Top

## Solid SURFACE

Reveco® Solid Surface is the ideal choice for a new kitchen or bath.

This durable, non-porous material is tough and beautiful, which makes Solid Surface the perfect choice for a bar top, worktable, bathroom vanity, or kitchen countertop.

Our fresh designs come in a variety of colors to complement your home's unique aesthetics.

The seamless integration of our material will give your kitchen or bath the finished and stunning smooth look you want.

### Collection :

- Plain Series
- Marble Series

### Specification :-

Size	Thickness	Weight
8 x 2.5 ft	6 mm	23 kg
8 x 2.5 ft	12 mm	46 kg
8 x 4 ft	6 mm	36 kg
8 x 4 ft	12 mm	74 kg

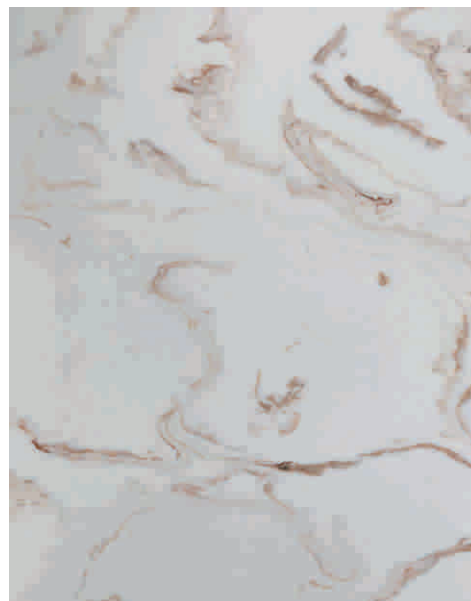
# Solid SURFACE



RE-1100



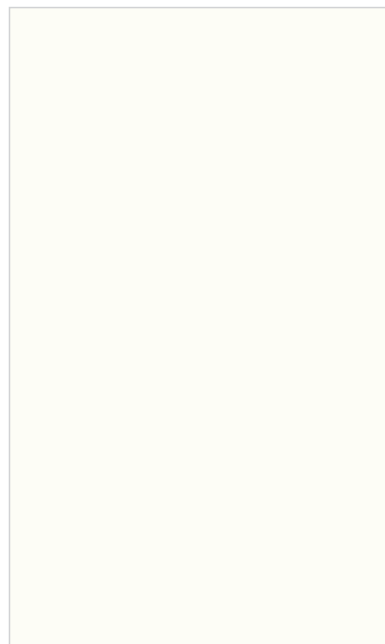
RE-1101



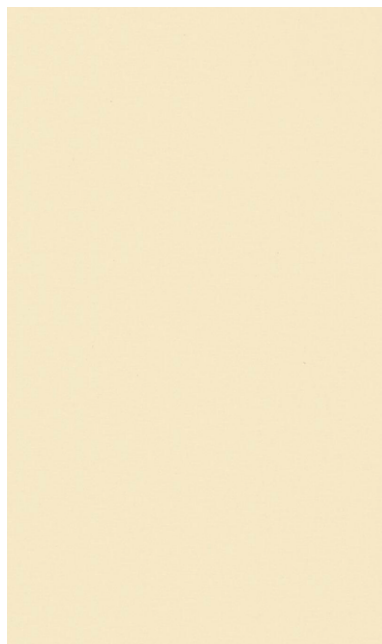
RE-1200



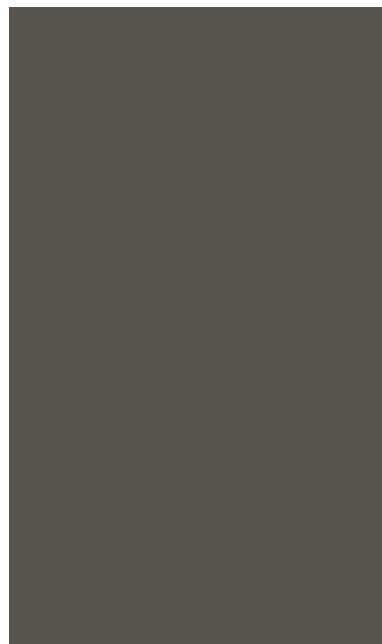
RE-1201



RE-1001



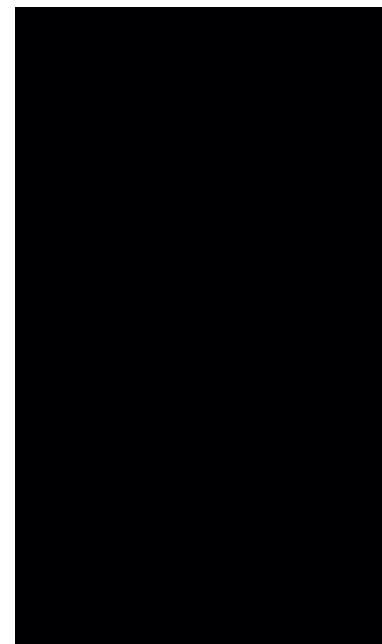
RE-1002



RE-1003



RE-1004



RE-1005

**PLAIN SERIES**



## Application

Usages: Kitchen , Bathroom, hospitals, furniture, commercial and retail spaces, wall.

## Product Advantages

Durable and renewable  
 Easy to maintain  
 Non-porous  
 Won't harbor bacteria

Eco friendly  
 Easy to clean  
 Won't stain

## Fabrication:-

With all Reveco® projects, allow a minimum 3 mm gap for expansion between walls.

### ● Cutting

Any type of circular saw may be used for ripping and sizing Reveco®. Reveco® is harder than wood. In order to cut a full sheet to obtain the desired pieces, saws and routers must be powerful enough to work the material properly. Straight cuts are made with a circular saw with carbide-tipped or diamond-tipped teeth. Curved cuts are made with manual routers or with numerically controlled routers (CNC), depending on the number of identical pieces that need to be cut. Rounded inside corners are routed in order to prevent cracking. Router bits must have tungsten carbide tips.

### ● Joining

All the edges of the pieces to be joined must be straight, square and thoroughly cleaned using ethanol on a clean white cloth before applying adhesive. Two-component Reveco® joint adhesive in the appropriate matching colour should be used to obtain inconspicuous seams.

### ● Finishing

Under normal circumstances, begin by sanding the entire element with 120 grit paper. In instances where there has been no prior fabrication of the sheet, it is

possible to start with 280 or 320 grit. Finish with a 320 grit paper, followed by 1200 to reach a recommended semi-gloss level. To improve the gloss level of the surface use 1200/1500/1800 wet or dry Scotch Brite pads, or polishing pastes available from 3M or other manufacturers. High-gloss finish level is very high-maintenance and not recommended for normal use

## CARE & MAINTENANCE

### ● Daily Care

Reveco® solid surface is easy to clean. Its fresh, hygienic appearance can be maintained by wiping up spills, grease and stains with a damp cloth and soapy water.

### ● Heat

Always use a heat protection pad, trivet (with rubber feet) or protective sink mat for hot cookware. Never place hot pans, particularly cast iron pans, directly onto a Reveco® top or in a sink. Excessive heat can damage any surface.

### ● Scratches

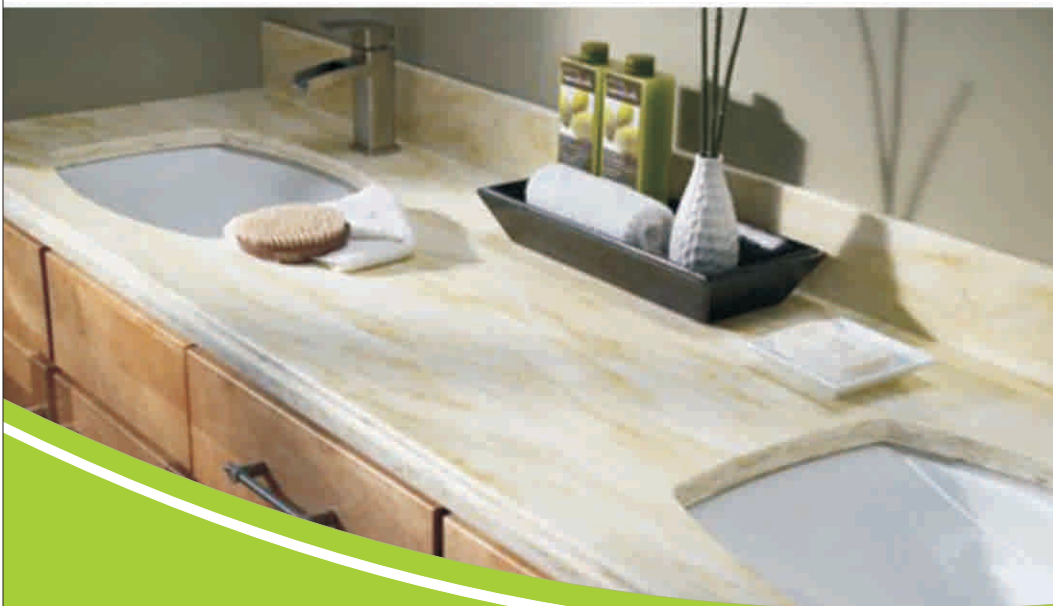
Like all materials, Reveco® solid surface will develop slight abrasion marks as a result of normal daily use. Please note the following: □ – Never cut or chop on Reveco® as this will score the work surface.

### ● Burn marks

Small burn marks or marks caused by nicotine can simply be removed using a scouring agent or an abrasive sponge. Should this give the high-gloss finish a matt appearance, rubbing the surface with a scouring pad will quickly return it to its high-gloss state.

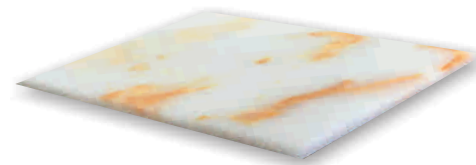
### ● Note:

6mm Reveco® is for vertical applications only. □ It is possible that a colour or pattern difference will occur between 6 mm and 12 mm Reveco® sheets.





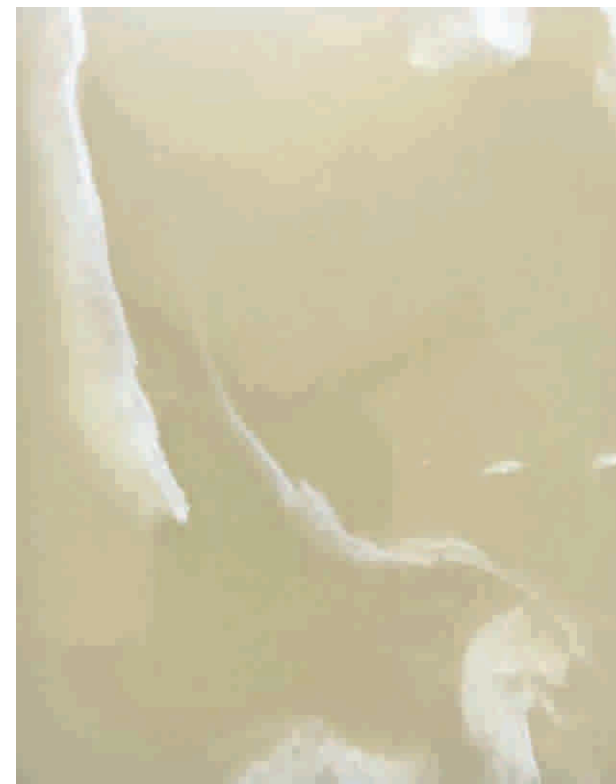




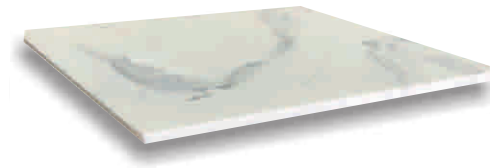
RE-9001



RE-9002



RE-9003

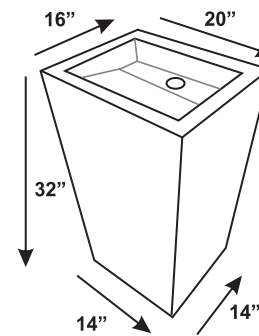
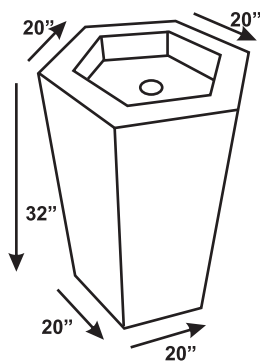
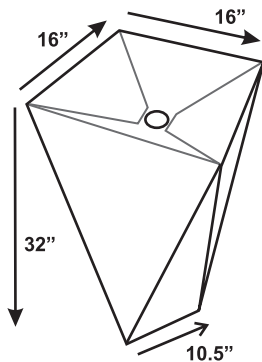


RE-7001



RE-7002

## ONYX WASH BASINS



Onyx Wash Basins





**Hilton Garden Inn**



**vijay sales**

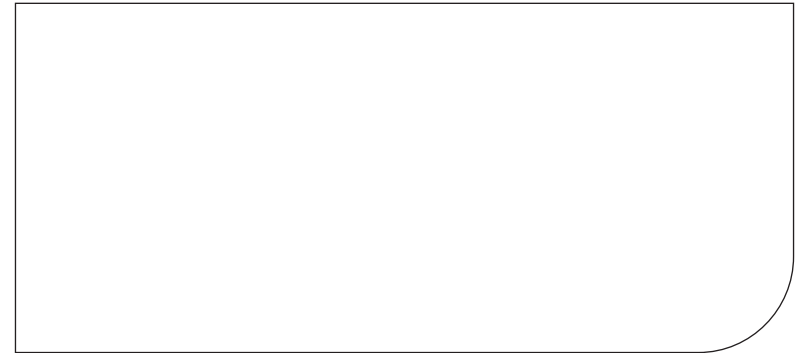
**lemon tree HOTELS**

**COUNTRY INN & SUITES**

**OUR ESTEEMED CLIENTS**



Alabaster | Solid Surface | Onyx



[www.reveco.in](http://www.reveco.in)

Head Off & Showroom :  
**REVEX ENTERPRISES PVT. LTD.**  
A-72, Naraina Indl. Area, Phase-1, New, Delhi-110028, India,  
Tel : 011-45402614 • [info@reveco.in](mailto:info@reveco.in) • [www.reveco.in](http://www.reveco.in)  
**Sales : 9818111376, 9971021515, 9810504811**



downloadreveco app



Download Reveco App



Follow us on



Like Us on